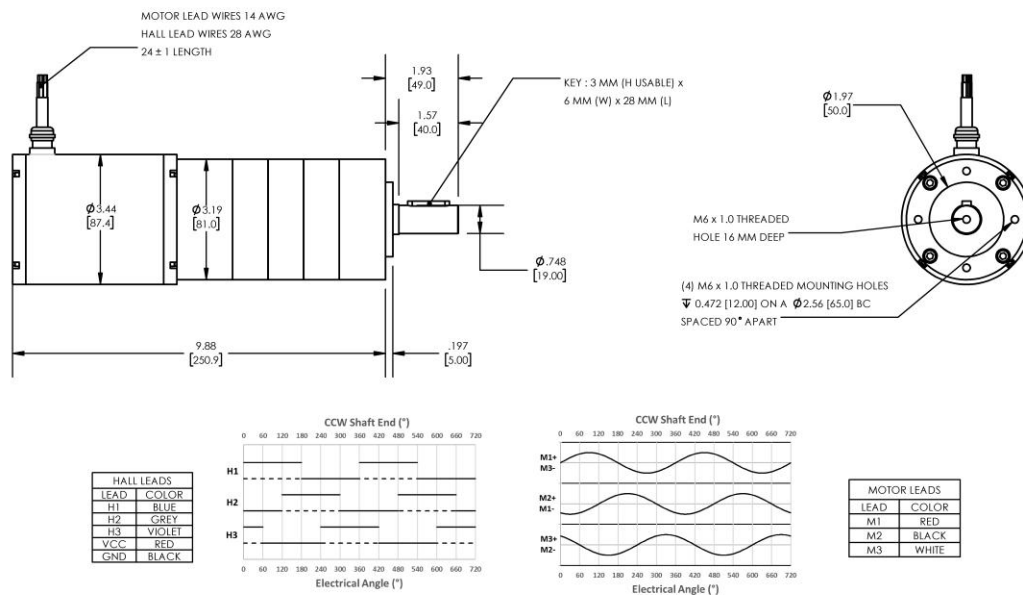


**Model Number:**
**MMP BL87-435E-60V GP81-308**


DIMENSIONS ARE INCHES [MM] UNLESS OTHERWISE STATED

PLANETARY GEARMOTOR OUTPUT PARAMETERS:	VALUE	UNITS	TOLERANCE
Gearhead Ratio (exact)	307.54 : 1		
Gearhead Shaft Output Speed (at full-load)	9.6	RPM	MAX
Gearmotor Rated Continuous Torque	1225	In-Lbs	MAX
Gearmotor Rated Peak Torque	<b>2125++</b>	In-Lbs	----
Gearhead Standard Backlash	36	Arc Minutes	MAX
Gearhead Efficiency	70%	----	----
Output Shaft Radial Load Capacity	225	Lbs	MAX
Output Shaft Axial Load Capacity	45	Lbs	MAX
Gearmotor Total Weight	14	Lbs	MAX

**++ All Peak Torque values are dependent upon duty. Contact our sales office for details.**

DC MOTOR PERFORMANCE PARAMETERS:	VALUE	UNITS	TOLERANCE
Rated DC Voltage	60	DC VOLTS	----
Rated Continuous Current	7.81	AMPERES	----
No-Load Speed	3659	RPM	MAX
Rated Speed	2956	RPM	+/- 15%
Rated Continuous Power Out	345	WATTS	+/- 15%
Rated Continuous Torque	158	OZ-IN	----
Peak Torque (motor only)	602	OZ-IN	----
No-Load Current	0.69	AMPERES	MAX
Back EMF Constant (Ke)	16.4	V/KRPM	+/- 10%
Torque Constant (Kt)	22.2	OZ-IN/AMP	+/- 10%
DC Armature Resistance	1.47	OHMS	+/- 15%
Armature Inductance	1.14	mH	+/- 15%
Armature temperature	155	DEG. C	MAX

**NOTES:**

- ENCODER & BRAKE OPTIONS AVAILABLE – [FOLLOW THIS LINK FOR DETAILS](#)
- NEMA MOUNTING FLANGE OPTION AVAILABLE – [FOLLOW THIS LINK FOR DETAILS](#)

**MIDWEST MOTION PRODUCTS**
**DESIGN, MANUFACTURING & DISTRIBUTION - MOTION CONTROL EQUIPMENT**
[www.midwestmotion.com](http://www.midwestmotion.com)

 email: [sales@midwestmotion.com](mailto:sales@midwestmotion.com)